

## Images of RS4 (Bone-scraping) residues

### using Hitachi S3500N VP-SEM

The key to the images is at the beginning of the document.

The images published in this pdf are those that were used in the training portion of the experiment reported in Monnier et al. 2012, *J. Arch. Sci.* For questions, please contact Gilliane Monnier at [monni003@umn.edu](mailto:monni003@umn.edu).

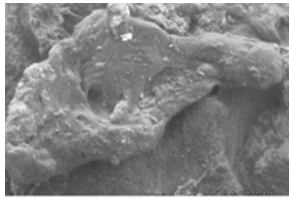
Naming conventions: 'RS' = Residue Study; 'D' = Dorsal side; 'V' = Ventral side; 'a', 'b', etc. = residue label; '25', '50', '115' = magnification used



RS4D\_a01.TIF



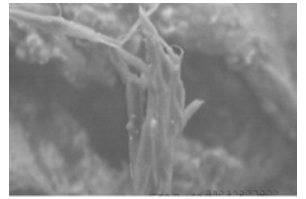
RS4D\_a02.TIF



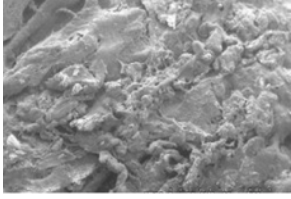
RS4D\_a03.TIF



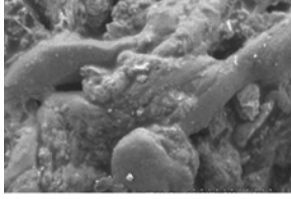
RS4D\_a04.TIF



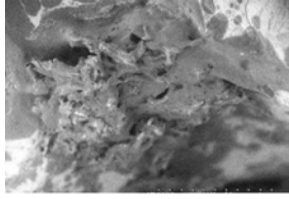
RS4D\_a05.TIF



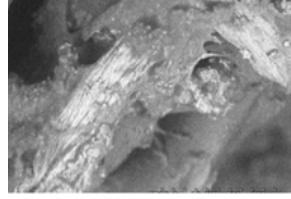
RS4D\_b01.TIF



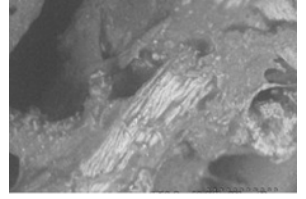
RS4D\_b02.TIF



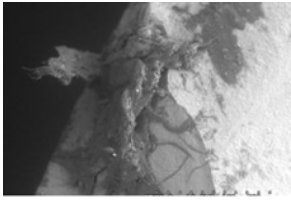
RS4D\_c01.TIF



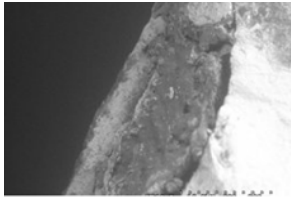
RS4D\_c02.TIF



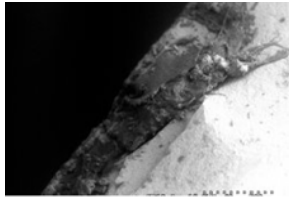
RS4D\_c03.TIF



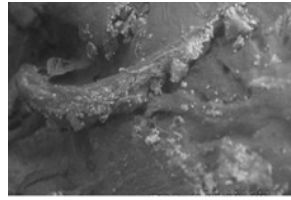
RS4D\_f01.TIF



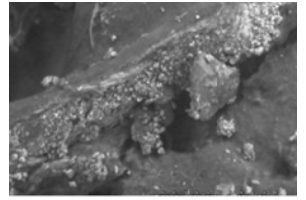
RS4D\_f02.TIF



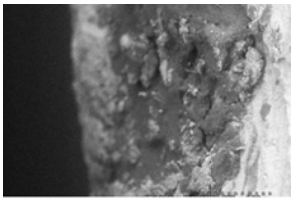
RS4D\_f03.TIF



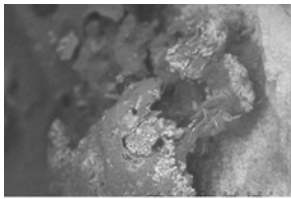
RS4D\_f04.TIF



RS4D\_f05.TIF



RS4D\_f06.TIF



RS4D\_f07.TIF

